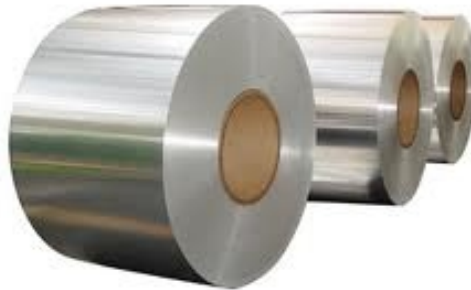
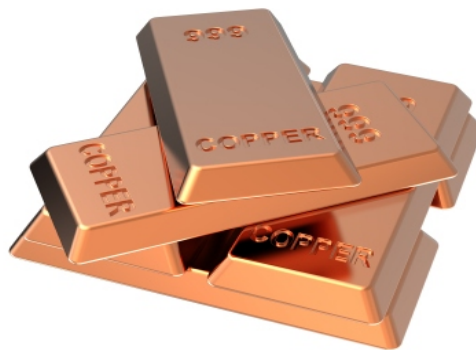


## CONTENTS

### ✍ Monthly Technical Levels



**Varun Gupta - Research Head**  
[varungupta@moneysukh.com](mailto:varungupta@moneysukh.com)  
[research@moneysukh.com](mailto:research@moneysukh.com)  
011-47617872 / 73



GOLD		
CONTRACT MONTH	CMP	TREND
DEC FUT	31250	SIDEWAYS
S1	S2	S3
30422	29203	27984
R1	R2	R3
32078	33297	34516

SILVER		
CONTRACT MONTH	CMP	TREND
DEC FUT	38985	SIDEWAYS
S1	S2	S3
37766	36246	34726
R1	R2	R3
40018	41538	43058

CRUDE		
CONTRACT MONTH	CMP	TREND
OCT FUT	5527	SIDEWAYS
S1	S2	S3
5381	5165	4949
R1	R2	R3
5673	5889	6105

COPPER		
CONTRACT MONTH	CMP	TREND
NOV FUT	458	SIDEWAYS
S1	S2	S3
446	428.0	410.0
R1	R2	R3
470.0	488.0	506.0

ALUMINIUM		
CONTRACT MONTH	CMP	TREND
OCT FUT	159	SIDEWAYS
S1	S2	S3
155.0	149.0	143.0
R1	R2	R3
163.0	169.0	175.0

LEAD		
CONTRACT MONTH	CMP	TREND
OCT FUT	151	SIDEWAYS
S1	S2	S3
147.0	141.0	135.0
R1	R2	R3
155.0	161.0	167.0

NICKEL		
CONTRACT MONTH	CMP	TREND
OCT FUT	919	SIDEWAYS
S1	S2	S3
895.0	859.0	823.0
R1	R2	R3
943.0	979.0	1015.0

ZINC		
CONTRACT MONTH	CMP	TREND
OCT FUT	197	SIDEWAYS
S1	S2	S3
192.00	184.0	176.0
R1	R2	R3
202.0	210.0	218.0

NGAS		
CONTRACT MONTH	CMP	TREND
OCT FUT	234	SIDEWAYS
S1	S2	S3
228.0	220.0	212
R1	R2	R3
240.0	248.0	256.0

Contracts	Price	% Chng
USDINR 291018	73.52	0.51
USDINR 281118	73.8025	0.5
USDINR 271218	74.0775	0.49



This report is for the personal information of the authorized recipient and does not constitute to be any investment, legal or taxation advice to you. Mansukh Securities and Finance Ltd (hereinafter referred as MSFL) is not soliciting any action based on it. This report is not for public distribution and has been furnished to you solely for your information and should not be reproduced or redistributed to any person in any form.

The report is based upon information that we consider reliable, but we do not represent that it is accurate or complete. MSFL or any of its affiliates or employees shall not be in any way responsible for any loss or damage that may arise to any person from any inadvertent error in the information contained in this report. MSFL or any of its affiliates or employees do not provide, at any time, any express or implied warranty of any kind, regarding any matter pertaining to this report, including without limitation the implied warranties of merchantability, fitness for a particular purpose, and non-infringement. The recipients of this report should rely on their own investigations.

MSFL and/or its affiliates and/or employees may have interests/positions, financial or otherwise in the securities mentioned in this report. This information is subject to change without any prior notice. MSFL and/or its affiliates and/or employees nor have any conflict of interest at the time of publication of the research report neither receives any compensation from the subject company or third party in connection with the research report in the past twelve months. Also MSFL and/or its affiliates and/or employees (research analyst) has neither served as an officer, director or employee of the subject company;

MSFL reserves the right to make modifications and alterations to this statement as may be required from time to time. Nevertheless, MSFL is committed to providing independent and transparent recommendations to its clients, and would be happy to provide information in response to specific client queries.