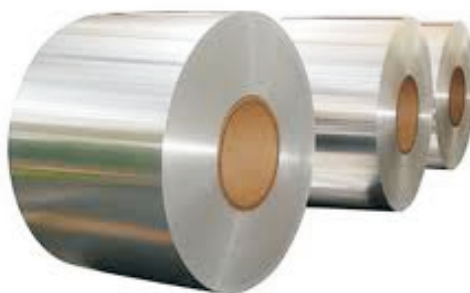


## CONTENTS

### Weekly Technical Levels



Varun Gupta - Research Head  
[varungupta@moneysukh.com](mailto:varungupta@moneysukh.com)  
[research@moneysukh.com](mailto:research@moneysukh.com)  
011-30211872/73



GOLD		
CONTRACT MONTH	CMP	TREND
FEB FUT	29349	SIDEWAYS
S1	S2	S3
29005	28690	28190
R1	R2	R3
29805	30490	30998

SILVER		
CONTRACT MONTH	CMP	TREND
MARCH FUT	38380	SIDEWAYS
S1	S2	S3
37612	37004	36440
R1	R2	R3
39090	39890	40780

CRUDE		
CONTRACT MONTH	CMP	TREND
DEC FUT	3754	SIDEWAYS
S1	S2	S3
3612	3405	3288
R1	R2	R3
3865	3940	4055

COPPER		
CONTRACT MONTH	CMP	TREND
FEB FUT	444.3	SIDEWAYS
S1	S2	S3
437	431.1	424.6
R1	R2	R3
452.9	460.9	468.9

ALUMINIUM		
CONTRACT MONTH	CMP	TREND
DEC FUT	133.65	SIDEWAYS
S1	S2	S3
130.1	126.9	124.2
R1	R2	R3
136.9	140.6	144.6

LEAD		
CONTRACT MONTH	CMP	TREND
DEC FUT	164.5	SIDEWAYS
S1	S2	S3
156.1	153.7	150.0
R1	R2	R3
167.9	170.8	174.8

NICKEL		
CONTRACT MONTH	CMP	TREND
DEC FUT	731.8	SIDEWAYS
S1	S2	S3
715.9	697.0	681.0
R1	R2	R3
745.9	765.5	778.0

ZINC		
CONTRACT MONTH	CMP	TREND
DEC FUT	209.6	SIDEWAYS
S1	S2	S3
206.10	203.1	200.4
R1	R2	R3
212.9	215.7	222.0

NGAS		
CONTRACT MONTH	CMP	TREND
DEC FUT	199.1	SIDEWAYS
S1	S2	S3
194.1	188.4	184
R1	R2	R3
204.9	209.5	214.0

Contracts	Price	% Chng
USDINR 271217	64.65	0.21
USDINR 290118	64.85	0.17
USDINR 260218	65.0525	0.17



This report is for the personal information of the authorized recipient and does not constitute to be any investment, legal or taxation advice to you. Mansukh Securities and Finance Ltd (hereinafter referred as MSFL) is not soliciting any action based on it. This report is not for public distribution and has been furnished to you solely for your information and should not be reproduced or redistributed to any person in any form.

The report is based upon information that we consider reliable, but we do not represent that it is accurate or complete. MSFL or any of its affiliates or employees shall not be in any way responsible for any loss or damage that may arise to any person from any inadvertent error in the information contained in this report. MSFL or any of its affiliates or employees do not provide, at any time, any express or implied warranty of any kind, regarding any matter pertaining to this report, including without limitation the implied warranties of merchantability, fitness for a particular purpose, and non-infringement. The recipients of this report should rely on their own investigations.

MSFL and/or its affiliates and/or employees may have interests/positions, financial or otherwise in the securities mentioned in this report. This information is subject to change without any prior notice. MSFL and/or its affiliates and/or employees nor have any conflict of interest at the time of publication of the research report neither receives any compensation from the subject company or third party in connection with the research report in the past twelve months. Also MSFL and/or its affiliates and/or employees (research analyst) has neither served as an officer, director or employee of the subject company;

MSFL reserves the right to make modifications and alterations to this statement as may be required from time to time. Nevertheless, MSFL is committed to providing independent and transparent recommendations to its clients, and would be happy to provide information in response to specific client queries.